



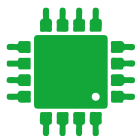
Magic Touch Projector



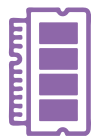
1920x1080
Resolution



Speaker 8W



HEXA CORE
Microprocessor



RAM 4GB +
FLASH 128GB
Memory

android 



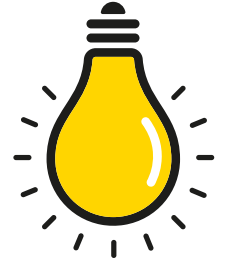
Transform any surface into an interactive
Touch experience with "Magic Touch Projector"

Imagine **turning a school desk or any flat surface** into an interactive touch table **up to 30 inches**. However, that's not the end of it! Aim the projector at a wall to create a **touch projection screen of up to 90"** using a **pen**. Or, use the traditional projection function for a spectacular screen of **up to 150"**.

Projection Mode **HORIZONTAL**

The innovative **MAGIC TOUCH PROJECTOR** technology allows to transform any horizontal flat surface, such as a school desk, into a **touch screen panel adjustable from 24" to 30"**.

**USABLE IN
ENVIRONMENTS**



Normally illuminated



Projection Mode **VERTICAL**

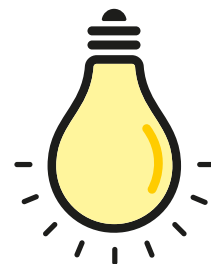
By placing **MAGIC TOUCH PROJECTOR** horizontally, you can project your content onto a screen or wall **up to 150"**. With the help of the **Magic Pen**, you can also perform the **touch function on a wall (max. 90")**.



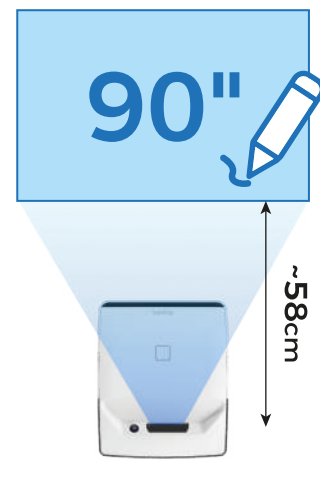
Video projection

MAGIC TOUCH PROJECTOR, equipped with **Ultra-Short Optics** (0.29:1 projection ratio), integrates the **DLP projection technology** with a **brightness of 320Ansi Lumen** and offer a natively **high-resolution FULL HD 1920x1080p** projection, allowing **up to 150"** diagonal projection on the wall.

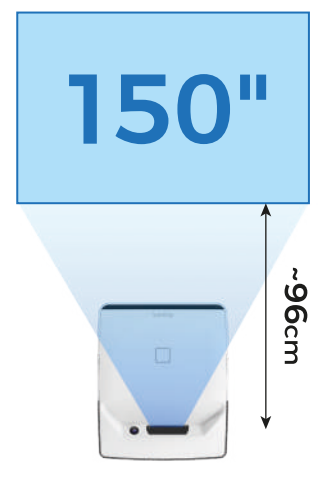
USABLE IN ENVIRONMENTS



Partially illuminated



Very low light



Powerful Performance

Endless Entertainment

android 

The **integrated Android 12** operating system, paired with a **Hexa Core microprocessor, 4GB of RAM, and 128GB of FLASH memory**, enables the execution of any application, whether educational, gaming, interactive, or for simple visualization purposes.

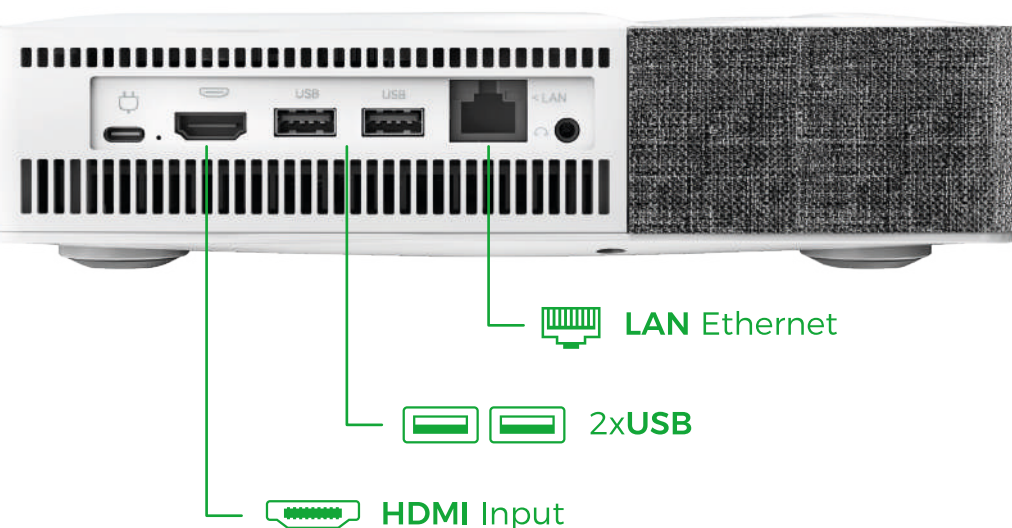
Lightweight and Portable

The projector's compact size of **24x19.5x5.6 cm** and weight of only 1.4 kg make it a **highly portable** interactive tool, requiring no calibration or installation.



Multimedia

The integrated **8W speakers** deliver powerful sound, allowing for high-quality playback of music, sound effects, and multimedia content.



Connectivity

The Android operating system integrated into the **MAGIC TOUCH PROJECTOR** allows for connectivity through **Wi-Fi** and an integrated **Ethernet LAN port**.

The **two USB ports** enable the connection of external peripheral devices, such as a mouse, keyboard, or USB memory drive.

Additionally, the **HDMI port** lets you connect a PC to the projector to display content directly on the screen (without touch functionality).

Control Quick and Simple



Remote control

The provided remote control operates in **two modes: Infrared and Bluetooth**. It enables you to control the device remotely when you prefer not to use the touch function.

The **Quick Keys** feature allows you to enable or disable the touch function, adjust the projector's focus and volume, quickly access setting functions, and navigate and select content easily.

Infrared Pen

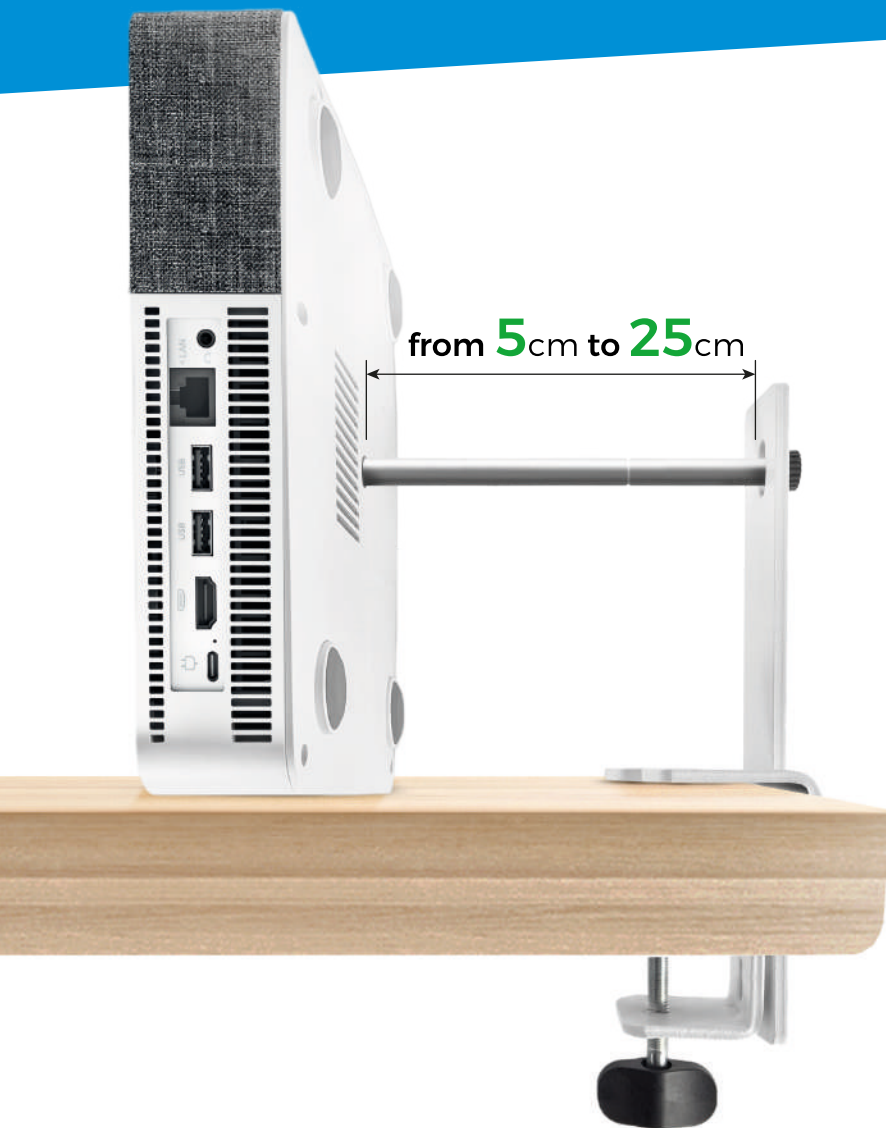
Using the included infrared pen, you can operate the **MAGIC TOUCH PROJECTOR** via **touch functions, even on a 90-inch** screen projected onto a wall.



Mirroring

The mirroring function allows you to easily **share content** from your smartphone or tablet **directly to the projector** (without a touch function).

Safe and Intuitive



Bracket

The included depth-adjustable bracket allows you to securely attach the **MAGIC TOUCH PROJECTOR** to any bench or table, ensuring **maximum stability**.

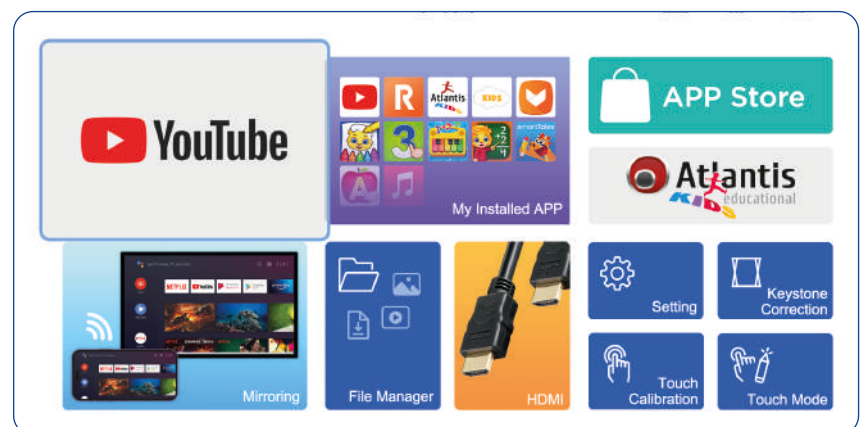
With the three combinable spacers, you can adjust the projector's position to meet various needs at distances of **5, 10, 15, 20, or 25 cm**.



Intuitive HomePage

The access screen (Home Page) of the **MAGIC TOUCH PROJECTOR** is simple, clear and intuitive. You can access all the main functions of the device **with just a touch**:

- Your installed APPs
- The Video Channel
- The store where new APPs can be downloaded
- Atlantis' recommended APPs
- The mirroring function
- Main settings and more



EDUCATIONAL SOFTWARE



ANDROID APP ON

Google™ play

Atlantis recommends the use of RV AppStudios Educational APPs

Over **10 APPs** and **70 Activities** available in



ENGLISH



MULTILANGUAGE

TO LEARN:

- Numbers
- Letters
- Mathematics
- Words
- Count
- Forms



FOR FUN:

- Drawings
- Colours
- Sounds
- Puzzle
- Games

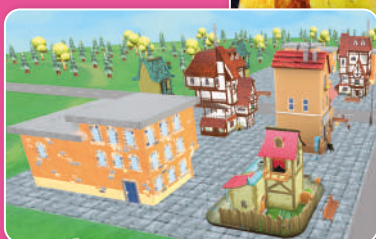


Atlantis Magic Touch is also compatible with most educational software on the Google Play Store or developed by third parties.



Marshmallow GAMES

Atlantis also recommends **ROQED** and **Marshmallow Games** applications that you can purchase at special conditions



ROQED KIDS



MAGIC TOUCH PROJECTOR

MAGIC TOUCH PROJECTOR

Code: E78-P320A-T

EAN: 8026974024400

OPTICS	Real Resolution	1080P (1929x1080@60Hz)
	Projection Technology	DLP
	Light source	LED
	Brightness	320 ANSI Lumen (@34W)
	Colours	30-bit (1.07 billions of colors)
	Contrast	2000:1 (FOFO 20000:1)
	Throw Ratio	0.29
	Lamp life	20000 ore
	Colour gamut	85%NTSC
	Zoom	24" to 30" (Table Projection)
	Lens	Glass
	Advanced Settings	Trapezium correction (Keystone) Zoom 24" to 30" (Table Projection) Focus correction
	Screen Format	16:9 or 4:3
Recommended brightness	Table projection (30" maximum) up to 300/400 Lux (normally environment) Wall projection (90" maximum) up to 100/120 Lux (partially environment) (150" maximum) up to 80 Lux (very low light environment)	
SYSTEM	Android version	12
	CPU	RockChip 3399 Hexacore 2 x Cortex-A72 64bit (Operating frequency over 1.8GHz) 4 x Cortex-A53 64 bit with NEON coprocessor (Operating frequency over 1.8GHz)
	GPU	Mali-T86x GPU (OpenGL ES1.1/2.0/3.0/3.1, OpenCL, DX11)
	RAM	4 GB (dual communication channel)
	Flash (Integrated Storage)	128 GB
	Wireless connectivity	Bluetooth 5.0 WiFi - IEEE802.11 a/b/g/n/ac (2.4Ghz/5Ghz)
	Video decoders	Multi-format HW video decoding: H.264 / H.265 / VP9
	Mirroring	Supported (Wireless Projection)
	I/O interface	2 x USB 3.0 1 x LAN 10/100/1000 Mbps 1 x HDMI input 1 x 3.5mm Headphone Output DC IN (type C)
	Loudspeakers	Stereo Speakers (2 x 4W)
TOUCH TECHNOLOGY	<ul style="list-style-type: none"> - Integrated high-resolution laser emitter and camera (camera (finger touch detection for table projection, up to 30")) - Infrared pen and integrated high-resolution camera (touch detection by pen for wall projection, up to 90") 	
MISCELLANEOUS INFO	Operating Temperature	0 ~ 40° C
	Power supply	12V@6A (<65W)
	Consumption	45W (Typical)
	Active dissipation	4-speed tachometric internal fan
Noise	<30dBA (Tipica)	
DIMENSIONS	Dimensions	Device: 238mm x 194mm x 56mm Giftbox: 270mm x 230mm x 130 mm
	Weight	Device: 1,4Kg Power supply with cable: 350g Remote control: 65g (including 2 x AAA batteries) Infrared Pen: 24g (including 2 x AAA batteries)
	Adjustable bracket	900g

All trademarks shown are registered and belong to their respective owners. Specifications are subject to change without notice. No liability for errors and/or omissions